

LOWER ROOF LAYOUT

Trusstech SA Pty Ltd
ABN: 40 1 318 22 140 16 High Street Dry Creek SA 5094 Ph: 08 8260 6006



OAKRIDGE
BUILDING SERVICES

PH : 83637222
FAX : 83637225

CONVENTIONAL TIMBER DETAILS

CEILING JOISTS 90x35 MGP10 @ 600 CTS UNO
HANGING BEAMS @ 1800 MAX CTS

TRUSS DETAILS
TRUSSES & BRACING TO BE INSTALLED, ERECTED
& BRACED IN ACCORDANCE WITH AS4440-2004

STABILIZER/HANGER @ 1800 CTS MAX UNO
BEARING WIDTH FOR TRUSSES 90mm UNO
TS = TRUNCATED STANDARD
TG = TRUNCATED GIRDER

S/B = SPEED BRACE
SV = SCOTCH VALLEY

NOTE: TRUSSES & JOISTS TO BE POSITIONED
DIRECTLY OVER STUDS

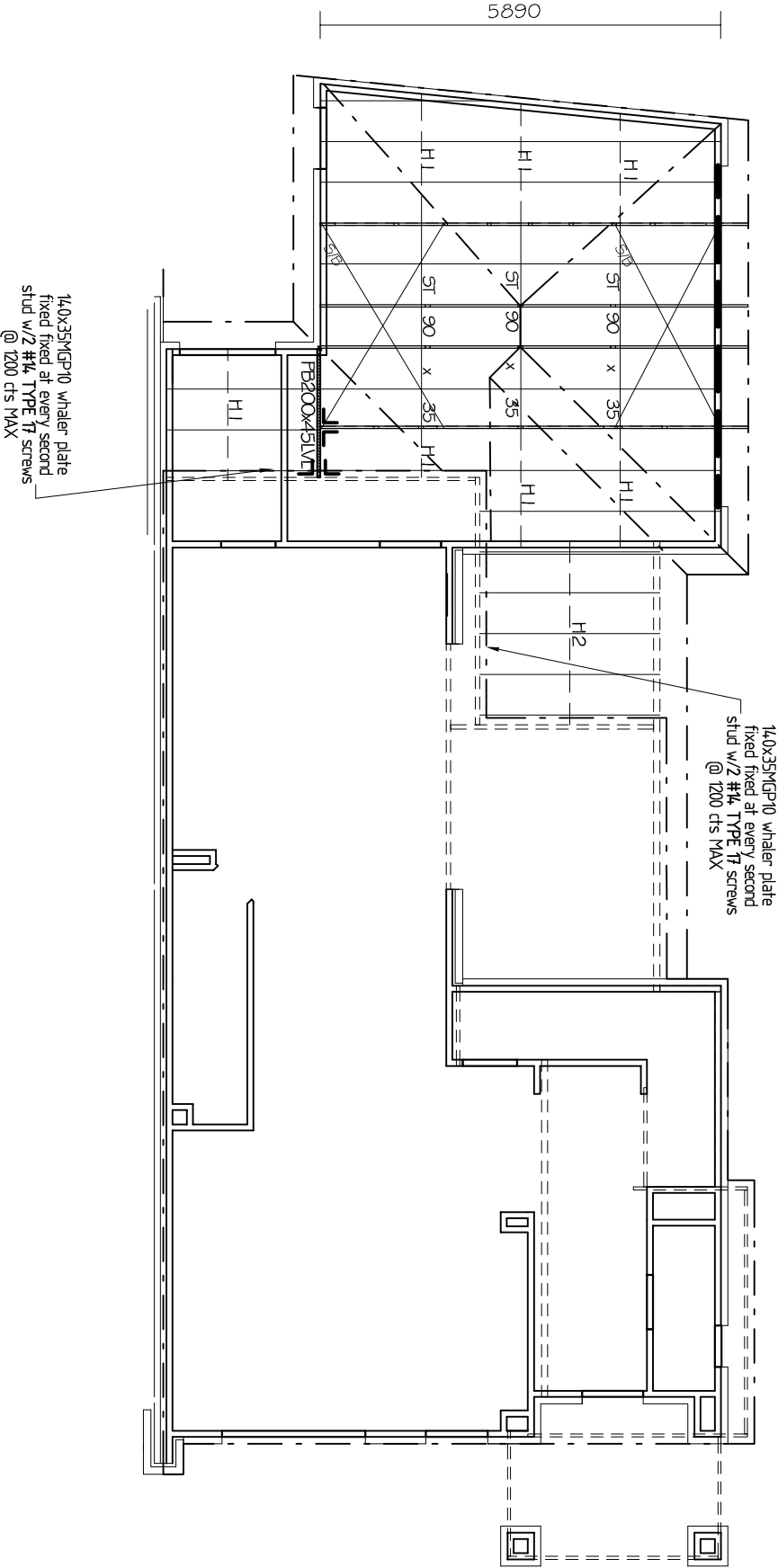
UNLESS SHOWN OTHERWISE ON LAYOUT,
NO SPECIAL LOADS HAVE BEEN ALLOWED.
EG - A/C UNITS, SOLAR PANELS ETC.

MINIMUM BEARING WIDTH FOR TIMBER TRUSSES SHOULD BE
70MM. FOR BEARING WIDTH LESS THAN 70MM, CONFIRMATION
FROM THE TRUSS ENGINEER SHOULD BE SOUGHT.

TRUNCATED GIRDER HAS BEEN DESIGNED TO CARRY
CONVENTIONAL HIP END TIMBER
(RAFTERS, HANGING BEAMS & HIPs)

X = INTERNAL SUPPORT / CANTILEVER POINT

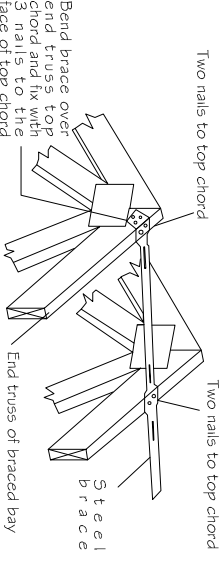
T15 FG2053
T14
T14
T16 TG1745



PURLINS : 90x45 MGP10 @ 900mm cts
generally with maximum endspans of 900mm
* JOINTS TO BE STAGGERED

Timber: H0 Dry Swd (can include KD Hwd)	Roofing: Metal Sheet	Wind / Ext / Int: N1 / 0.9 / 0.2	Customer: DEDICATED DEVELOPMENT PTY LTD Site Address: 638 BURBRIDGE RD, WEST BEACH	
Pitch: 22.5 Deg	TC fix/rest: Metal @ 1200c / 1200	Structural Fascia Type: No	As per AS 1684.1	
Overhang: 550 mm	Ceiling: Plaster 10mm Supa Span	Ground Snow Load: Sg = 0 kPa		
Spacing: 1200mm	BC fix/rest: Direct fix @ 600c / 600	Structure Type: House	Detailer: Matt Ope	Signed:

SHEET 2/6	
Date: 15/02/2019	
Scale: 1 : 100	
Job No: TT02399	

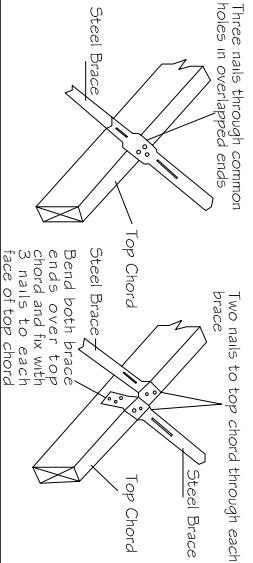


SPEED BRACE FIXING DETAILS AT APEX

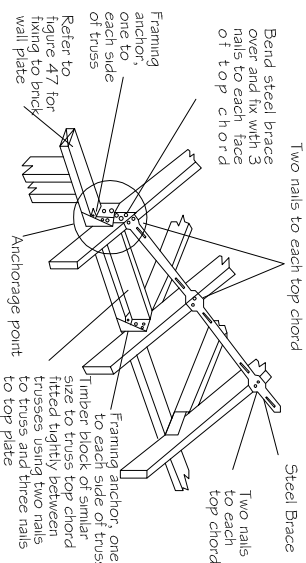
H1 = 120x35 MGP10
H2 = 140x35 MGP10
H3 = 190x35 MGP10
H4 = 190x45 MGP10
H5 = 240x45 MGP10

● DENOTES STRUTTING POINT
FAN STRUT POINT 90x70
WITH 290x35 SPREADERS

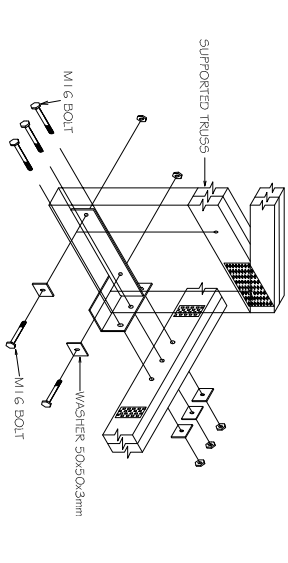
JOINT GROUP=JD5
ALL MATERIALS ALLOWED AS PER AS 1684.2-2010
HANGERS:



SPEED BRACE FIXING DETAILS AT HEEL



HIGH-LOAD TRUSS BOOT



TRUSS BOOT

